

VÁLVULAS ALAVANCA



VALM

18

32

VALM: Alavanca/Mola
VALT: Alavanca/Trava

18: 1/8" (BSP)
14: 1/4" (BSP)
38: 3/8" (BSP)
12: 1/2" (BSP)

32: 3/2 Vias
52: 5/2 Vias

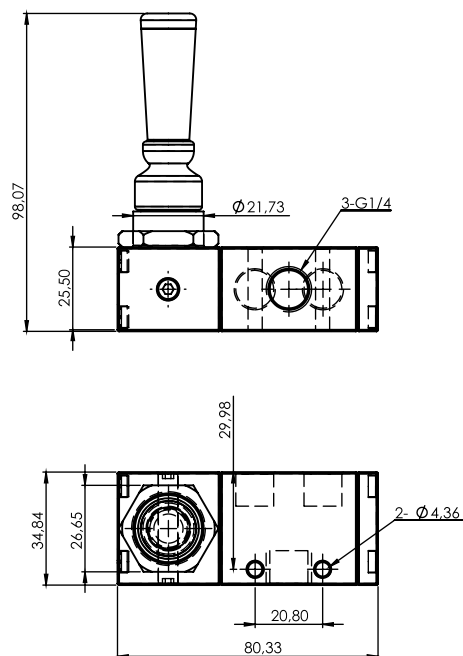
Especificações Técnicas

Modelo	VALM18	VALM14	VALM38	VALM12
	VALT18	VALT14	VALT38	VALT12
Tamanho da Rosca (BSP)	1/8"	1/4"	3/8"	1/2"
N.º de Vias	3/2 ou 5/2	3/2 ou 5/2		5/2
Fluído	Ar Comprimido			
Pressão de Trabalho	0 ~ 8 Bar			
Pressão Máxima	1,0 (MPa)	10 (Bar)	10,4 (Kgf/Cm ²)	
Temperatura (°C)	-10 ~ 60			
Lubrificação	Não necessita			

VÁLVULA ALAVANCA

Dimensional VALM1832 e VALT1832

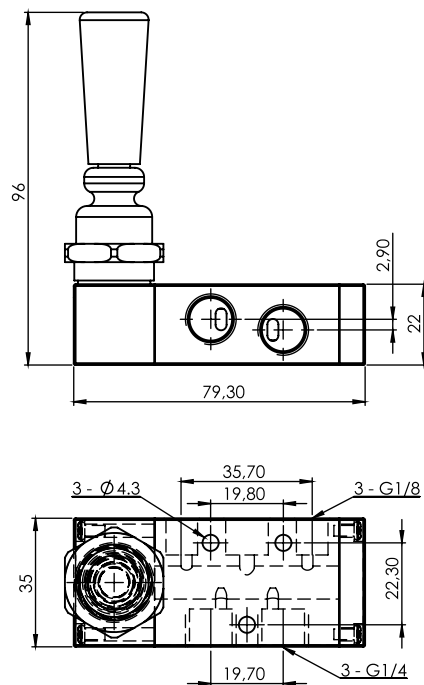
Dimensional VALM1432 e VALT1432



VÁLVULA ALAVANCA

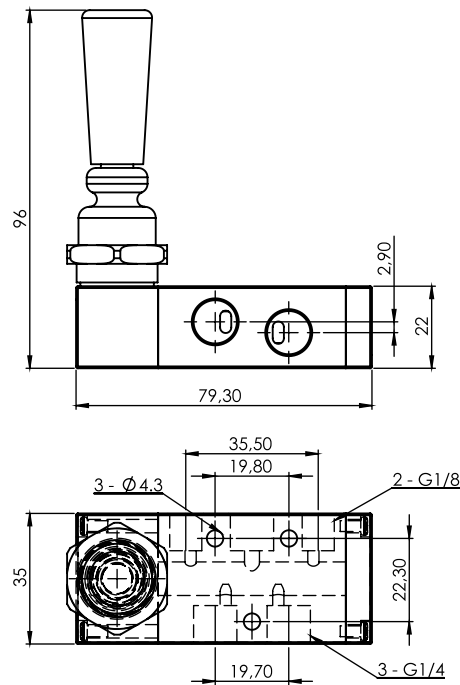
Dimensional VALM1852 e VALT1852

Dimensional VALM1452 e VALT1452



VÁLVULA ALAVANCA

Dimensional VALM3852 e VALT3852



Dimensional VALM1252 e VALT1252

